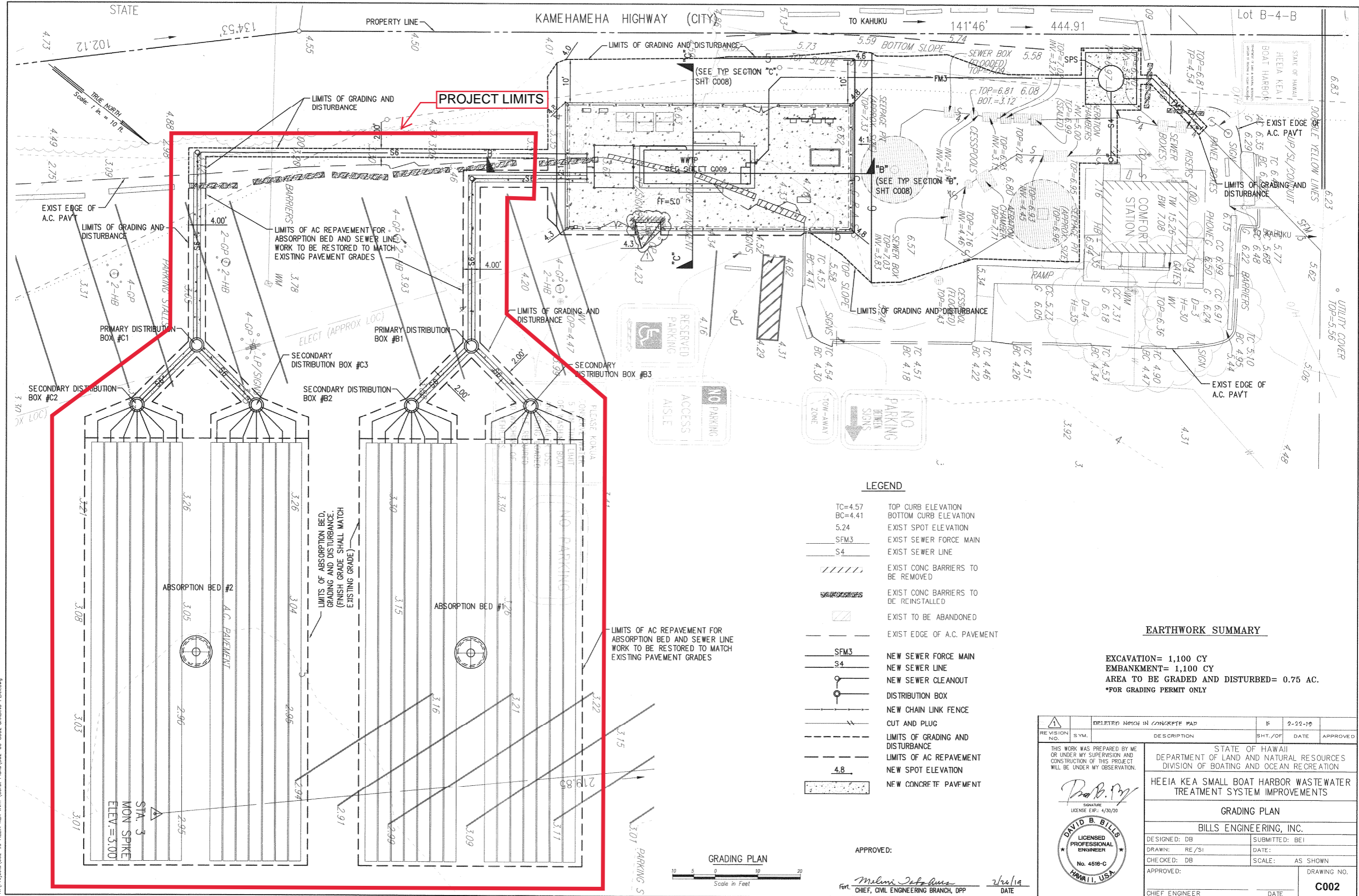


REVISED PER ADDENDUM NO. 5
ISSUED 6/2/20



- LEGEND**
- TC=4.57 TOP CURB ELEVATION
 - BC=4.41 BOTTOM CURB ELEVATION
 - 5.24 EXIST SPOT ELEVATION
 - SFM3 EXIST SEWER FORCE MAIN
 - S4 EXIST SEWER LINE
 - EXIST CONC BARRIERS TO BE REMOVED
 - EXIST CONC BARRIERS TO BE REINSTALLED
 - EXIST TO BE ABANDONED
 - EXIST EDGE OF A.C. PAVEMENT
 - SFM3 NEW SEWER FORCE MAIN
 - S4 NEW SEWER LINE
 - NEW SEWER CLEANOUT
 - DISTRIBUTION BOX
 - NEW CHAIN LINK FENCE
 - CUT AND PLUG
 - LIMITS OF GRADING AND DISTURBANCE
 - LIMITS OF AC REPAVEMENT
 - NEW SPOT ELEVATION
 - NEW CONCRETE PAVEMENT

EARTHWORK SUMMARY

EXCAVATION= 1,100 CY
EMBANKMENT= 1,100 CY
AREA TO BE GRADED AND DISTURBED= 0.75 AC.
*FOR GRADING PERMIT ONLY

REVISION NO.	SYM.	DESCRIPTION	SHT./OF	DATE	APPROVED
1		DELETED NOTCH IN CONCRETE PAD	F	2-22-19	

THIS WORK WAS PREPARED BY ME OR UNDER MY SUPERVISION AND CONSTRUCTION OF THIS PROJECT WILL BE UNDER MY OBSERVATION.

STATE OF HAWAII
DEPARTMENT OF LAND AND NATURAL RESOURCES
DIVISION OF BOATING AND OCEAN RECREATION

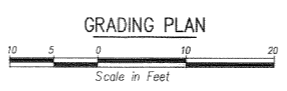
HEEIA KEA SMALL BOAT HARBOR WASTEWATER TREATMENT SYSTEM IMPROVEMENTS

GRADING PLAN

BILLS ENGINEERING, INC.

DESIGNED: DB	SUBMITTED: BEI
DRAWN: RE/SI	DATE:
CHECKED: DB	SCALE: AS SHOWN
APPROVED:	DRAWING NO. C002
CHIEF ENGINEER	DATE

DAVID B. BILLS
LICENSED PROFESSIONAL ENGINEER
No. 4518-C
HAWAII, USA



APPROVED:

Melina J. J. [Signature]
CHIEF, CIVIL ENGINEERING BRANCH, DPP

2/26/19
DATE

File: 08 Feb 2019 11:11:11am
N:\Projects\562-N\HEEA KEA WWP\Const Plans\562-00 0202 GRADING PLAN.dwg